



FULL LINE CATALOG

Self-Leveling Underlayments, Patching Solutions, and Primers

**FLOOR
PREP**
BY DEPENDABLE

Your Dependable Flooring Solution

FloorPrep by DEPENDABLE, LLC is a Midwest manufacturer of floor preparation products including patches and self-levelers. FloorPrep's long presence in the flooring underlayment industry is no coincidence. For over 60 years Dependable has kept up with new technologies and customer demands. The corporate culture puts emphasis on three main things including quality, customer service, and innovation.

FloorPrep's commitment to the market needs has proven itself time and time again. Our gypsum and cementitious based products have been formulated to withstand the test of time; while our primers, additives and moisture mitigation products help improve system performance. Distributors and contractors have long recognized our quality as a leading choice in prepping floors for finishes.

FLOOR PREP

BY DEPENDABLE



AIA
Continuing
Education
Provider



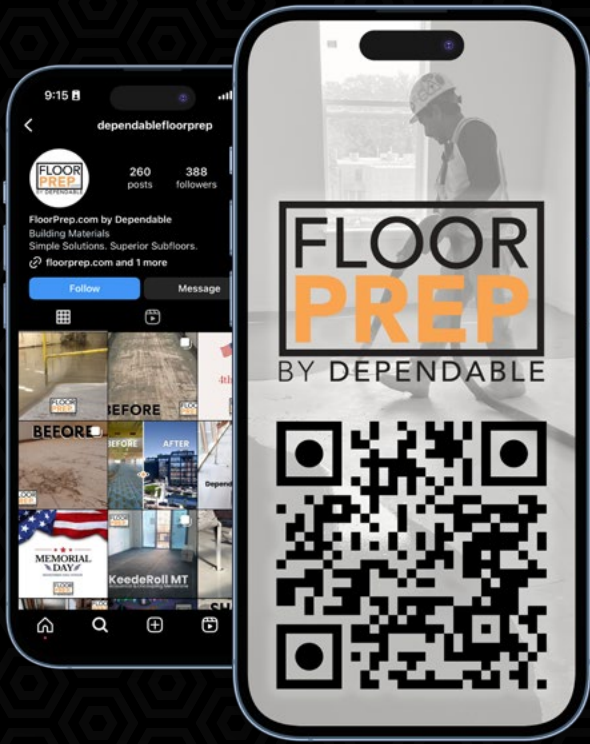
QUALITY CONSTRUCTION STARTS AT HOME
American Made. Contractor Approved.

TIME TO LEVEL UP

Make it Flat. Pour it Smooth. Build it Sound.



WE HAVE IT COVERED



SKIMFLOW FAMILY
SELF-LEVELING UNDERLAYMENTS

PAGES 8-9

PLATFORM FAMILY
PERFORMANCE DRIVEN SELF-LEVELING UNDERLAYMENTS

PAGES 10-11

PREP PRO FAMILY
FAST DRYING SELF-LEVELING UNDERLAYMENTS

PAGES 14-15

PATCH & REPAIR

PAGES 16-19





PRIMERS & EPOXIES

PAGES 20-23

UNDERLAYMENTS & SOUND CONTROL

PAGES 24-27

CONNECT

-  FloorPrep by Dependable, LLC
-  @dependablefloorprep
-  Keene Building
-  @DependableLLC

Start with the Ultimate Foundation

At FloorPrep by Dependable, we understand that a flawless finish always begins with a perfectly poured subfloor. That's why our top-tier self-leveling underlayments are crafted to meet the highest standards of professional installers.

Whether you're working with classic calcium aluminate or cutting-edge hybrid gypsum, our solutions will tackle any challenge. Find the right products to elevate your flooring game with the chart below. Ensuring a smooth, enduring foundation for every job.

FloorPrep Underlayment	Compression Strength
Skimflow® LCB	4200 PSI (28 Days)
Skimflow® LCB Rapid	5500 PSI (28 Days)
Skimflow® NP	5000 PSI (28 Days)
Skimflow® LP	4100 PSI (28 Days)
Platform L2	4100 PSI (28 Days)
Platform L3	4200 PSI (28 Days)
PrepPro FT	6500 PSI (28 Days)
PrepPro ELW	> 3500PSI (28 Days)
PrepPro RC	5500 PSI (28 Days)
Skimcrete® XL	> 3750 PSI (28 Days)
Polyskim®	4000 PSI (28 Days)
White Skimcoat™	4000 PSI (28 Days)
PrepPro Feather	> 3500 PSI (28 Days)

BUILDING TYPE	SUBSTRATE							BUILDING TYPE	SUBSTRATE				
	Single-Family	Multi-Family	Light Commercial	Commercial / Retail	Hospitality	Institutional / Medical	Industrial / Manufacturing		Extruding Gypsum	Plywood / OSB / Wood Plank	Concrete / Concrete Plank	Concrete Repair / Leveling	Adhesive Restraint
X	X	X	X	X	X			X	X		X	X	X
X	X	X	X	X	X			X	X		X	X	X
X	X	X		X	X			X	X		X	X	
X		X						X	X		X		
		X	X	X					X	X	X		
		X	X	X	X				X	X	X		
		X	X	X	X	X			X	X	X		
X	X	X	X	X	X	X				X	X		
X	X	X	X	X	X			X	X	X	X		
X	X	X						X	X			X	
X	X	X	X	X	X			X	X	X	X		

■ Selections represent optimal product placement. Contact Technical Services for assistance with your unique project.



THE REPAIR FAMILY FOR THE MULTI-FAMILY

ENGINEERED FOR PLACEMENT OVER GYPSUM AND WOOD SUBSTRATES

FloorPrep.com's materials offer everything from rapid repair of existing gypsum substrate, to partial or full substrate replacement while retaining sound and fire ratings (UL). Owned and backed by one of the largest Multi-Family solutions providers in the industry, FloorPrep.com offers American engineered and manufactured solutions for new construction and renovation.



PrepPro SLV™

Provides a sound, strong, consolidated surface prior to flooring repair. Typically compatible with primers and adhesives for non-absorbent surfaces once cured.



SkimFlow® LCB

A Pumpable, Fiber-Reinforced, Polymer-Modified Gypsum Hybrid SLU. LCB is ideal for existing gypsum, wood and compromised substrates.



Primer MF

Primer MF provides superior bond and enhances the product performance of our underlayments and patches. Ultra low-VOCs, fast drying, tremendous coverage and easy handling.



MF Odor Seal

Penetrates into absorbent substrates and forms a strong odor and water-resistant film. Penetrates into absorbent substrates and forms a film locking moisture out, and odors in.

FloorPrep's comprehensive range of Self-Leveling cement technologies are designed to address every aspect of your substrate needs. Whether you're dealing with sound concrete, smooth concrete, weak concrete, adhesive residue, dusty gypsum, wood, vinyl, radiant surfaces, or even unique substrates, rest assured, we have the perfect solution for you.

Seeking speed and strength for coatings or polishing? Looking for lightweight options with optimal light reflectance for open box spaces? Concerned about gypsum compatibility or in need of moisture mitigation solutions?

At FloorPrep, we have you covered every step of the way.



SKIMFLOW® LCB

Fiber Reinforced Gypsum Self-Leveling Underlayment

SKIMFLOW® LCB is a fiber reinforced, polymer modified gypsum based self leveling underlayment. SKIMFLOW® LCB is ideal for use over existing gypsum, wood and compromised substrates. SKIMFLOW® LCB may be used over approved wood subfloors without reinforcing lath and quickly provides a sound, dimensionally stable and smooth surface for a wide variety of floor finishes.



- Fiber reinforced for wooden floors and compromised gypsum substrates
- Accelerated drying facilitates rapid flooring installation
- Walkable after 2 hours, light trade traffic next day
- Suitable where UL Fire Ratings are required
- Apply from 1/4" - 2"+ in a single lift



SKU	SIZE	PALLET	Compression Strength	4200 PSI (28 Days)
DSFLCB50	50 lb bag	48 bags	Time to Flooring	1/4" depth - 24 hrs

SKIMFLOW® LCB RAPID

Rapid Setting, Fiber Reinforced Self-Leveling Underlayment

SKIMFLOW® LCB Rapid is a pumpable self-leveling compound designed for dry, interior, fast track installations. Featuring accelerated drying to facilitate foot traffic as quickly as 90 minutes after placement and floor covering installations next day. SKIMFLOW® LCB Rapid is suitable for use over existing gypsum, wood, adhesive residue and compromised substrates providing a strong, smooth surface for a wide variety of floor finishes.



- 40% faster to foot traffic, 20% faster to flooring!
- Open to foot traffic as quickly as 90 minutes after placement
- Ideal for rapid resurfacing of damaged and distress gypsum substrates



SKU	SIZE	PALLET	Compression Strength	5500 PSI (28 Days)
DSFLCBR50	50 lb bag	48 bags	Time to Flooring	1/4" depth - 16-20 hrs

SKIMFLOW® NP

Premium Hybrid Cement Self-Leveling Underlayment

SKIMFLOW® NP (No Prep) is a hybrid cement self-leveling underlayment for time-sensitive projects, ensuring no shrinkage on compromised substrates. It offers fast-track installation without sacrificing quality, providing excellent flowability, healing properties, and robust performance. Suitable for various surfaces without preparation, it dries quickly to keep both residential and commercial applications on schedule.



- No Pull SLU provides premium, smooth surface for flooring
- Suitable where UL Fire Ratings are required
- Walkable after 2 - 3 hours, light trade traffic next day
- Optimized for installations 1/4" and under, can be poured to 2"+
- Extendable with sand



SKU	SIZE	PALLET	Compression Strength	5000 PSI (28 Days)
DSFNP50	50 lb bag	48 bags	Time to Flooring	1/4" depth - 16 hrs

SKIMFLOW® LP

Hybrid Cement Self-Leveling Underlayment

SKIMFLOW® LP features hybrid gypsum hydraulic cement technology, ideal for leveling floors up to 1/4" in 12" or achieving very flat surfaces. Drying quickly for rapid flooring application in as little as 16 hours. With excellent volume stability and bonding, it applies easily over clean substrates like concrete, wood, and well-bonded adhesives.



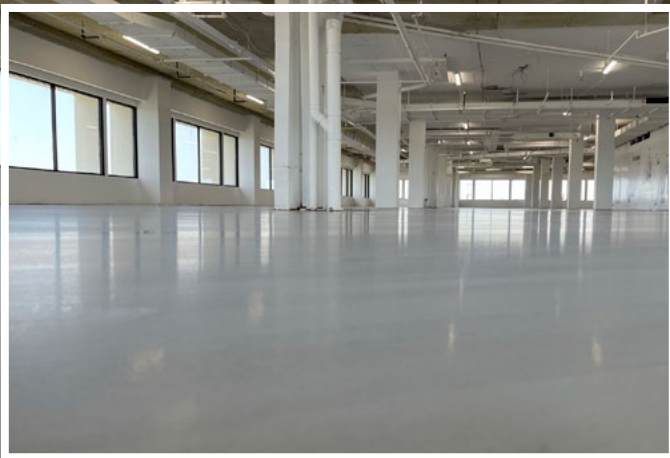
- No Pull SLU provides smooth surface for flooring
- Walkable after 2 - 3 hours, light trade traffic next day
- Optimized for installations 1/4" and above, can be poured to 2"+
- Extendable with sand

SKU	SIZE	PALLET	Compression Strength	4100 PSI (28 Days)
DSFLP50	50 lb bag	48 bags	Time to Flooring	1/4" depth - 24 hrs

PLATFORM FAMILY

Have a project that you can only afford to do once? Does the installations requiring exceptional outcomes? Platform Performance Cements is the ultimate choice for critical projects demanding top-tier results. Engineered for installations needing precise flatness and enduring quality, our cements excel on compromised substrates and in environments with minimal mechanical preparation. Platform Performance Cements ensure exceptional performance and reliability, making them the preferred solution for projects that demand perfection from start to finish.

Self-Leveling Simplified with Platform Performance Cements.



Platform L3

High Flow, High Strength Self-Leveling Underlayment

Platform L3 is an advanced, polymer-modified self-leveling underlayment featuring Synthecem™ portland cement technology. Engineered for rapid hardening and high strength, it offers a shrinkage-free binder system, ideal for low-prep installations in residential, commercial, and institutional settings. Suitable for various substrates including concrete, gypsum, wood, and well-bonded adhesives.



- Synthecem cement system facilitates low surface preparation
- 5000 psi, dense surface provides superior resistance to wheel tracking and high point loads
- Suitable to leave exposed with approved coatings applications
- Optimized for installations 1/4", capable to 2" +



SKU	SIZE	PALLET	Compression Strength	4200 PSI (28 Days)
PL350	50 lb bag	48 bags	Time to Flooring	1/4" depth - 24 hrs

Platform L2

Self-Leveling Underlayment

Platform L2 utilizes Synthecem portland cement technology for a versatile self-leveling underlayment, accommodating variable water ratios for leveling and ramping. It's ideal for uneven or damaged floors in residential, commercial, and institutional settings, drying to a smooth, hard surface in 16 hours. Excellent volume stability and bonding, it applies easily over various substrates without mechanical preparation, including concrete, gypsum, wood, and corrugated steel deck, as well as well-bonded adhesives.



- Synthecem cement system facilitates low surface preparation
- Optimized for application 1/4" - 2" +
- Walkable after 2-3 hours, extendable with sand
- Typically ready for flooring after 24 hours*



SKU	SIZE	PALLET	Compression Strength	4100 PSI (28 Days)
PL250	50 lb bag	48 bags	Time to Flooring	1/4" depth - 24 hrs

The solution to yesterday's flooring failures?
PLATFORM Synthecem™ technology products.



More than Calcium Aluminate Cements, and far more than Engineered Cements, Synthecem™ is purpose-driven, hydraulic cement underlayment technology that optimizes successful installations.

Working from a baseline of European Technology, Synthecem sets a new performance standard by combining a proprietary blend of carefully controlled cements and chemical admixtures.

Integration of Synthecem DNA means products offer outstanding dimensional stability, bond, self-leveling and smoothing characteristics.

Clean, Prime and Pour with Synthecem powered products to generate flat, smooth and hard surfaces that are suitable for all finished flooring.

OWNERS / SPECIFIERS

Materials utilizing Synthecem technology facilitate flat, durable floors that provide for efficient flooring installation and increase the value of a whitespace.

DISTRIBUTORS

Simplify the contractors life. Synthecem derived materials mean less work, more forgiveness and better outcomes for contractors.

CONTRACTORS

Materials utilizing Synthecem technology require less surface preparation, ensuring maximum jobsite versatility. Featuring reduced dust when mixing, offering greater working time and forgiving placement.

PROJECT PROFILE

Atlanta's Historic Pratt-Pullman Yard

FloorPrep Products were the First Down in this Fully Floating And Reinforced Substrate Solution for this Football Venue

Details: Pratt-Pullman Yards Industrial Site converted for Fan Controlled Football (FCF)

Issue: 1 - 1.5" bellies throughout appx. 30,000 ft² concrete substrate. Unbonded solution required.

Solution: Quiet Curl 025 MC sound mat inverted with 1" of Platform L2



Experience the revival of Atlanta's iconic Pratt-Pullman Yard, now transformed into a cutting-edge "creative city" tailored for the entertainment industry, including the innovative Fan Controlled Football (FCF).

Spanning 27 acres in Kirkwood, this site, steeped in history since its acquisition in 1994 by the Pratt Engineering Company, originally served as a sugar and fertilizer processing plant before becoming a crucial repair center for Pullman Railroad cars in 1926. Owned by Atomic Entertainment, the yard is now a dynamic mixed-use hub featuring entertainment venues, dining options, and residential and commercial spaces, seamlessly blending historical preservation with modern innovation. Partnering with FloorPrep.com and All American Surfaces South, Platform Performance Cements delivered a flawless, non-invasive solution for the site's unique concrete substrate, ensuring a smooth and resilient foundation for its role as a premier venue in the FCF and creative arts communities.

PREP PRO FAMILY

The ultimate toolkit for repair professionals for when a product needs to excel in the most challenging of applications. Our high-performance, specialty solutions are crafted for environments that demand flexibility and durability. From rapid repairs and moisture control to grind & seal, epoxy coating, polishing, and balcony restoration, our self-drying solutions are engineered to excel under pressure. Elevate your repair game with PrepPro—where excellence meets innovation in every challenge.

Unlock Peak Performance with PrepPro.



Lighten
Your Load.
Strengthen
Your Floors.

Fast-track your flooring with
PrepPro ELW.

PrepPro FT

Fast Track, High Strength Under/Overlayment

PrepPro Fast Track (FT) is a premium self-drying, calcium aluminate cement based self-leveling underlayment with superior placement characteristics and low surface pour capability. PrepPro FT is suitable for leveling and smoothing of floors for tile, stone, resilient, wood, carpet and other floor coverings. PrepPro FT offers a variable water ratio to aid in application and design flexibility.



- Superior leveling with 28 day strengths >5500 - 6500 psi
- Rapid strength development, Optimized for grind and seal applications
- Polishable surface for warehouse or similar environments*
- Walkable in 2 hours, suitable for flooring or coatings 4-16 hrs after pour*
- Apply from feather to 1.5" NEAT in a single lift

SKU	SIZE	PALLET	Compression Strength	6500 PSI (28 Days)
PPFT50	50 lb bag	48 bags	Time to Flooring	1/4" depth - 16 hrs

PrepPro ELW

Everyday Light Weight Self-leveling Underlayment

PrepPro Everyday Light Weight (ELW) is a premium fast drying, calcium aluminate cementitious self-leveling underlayment that reduces the dead weight load of traditional SLU's by about 35% all while delivering compressive strengths > 3500 psi. PrepPro ELW is suitable for use in most flooring applications without the costly and time consuming need to cap with a stronger product prior to installing finished flooring.



- Reduced dead weight by about 35% over traditional SLUs
- Install most finished flooring next day without capping*
- Use from 1/4" - 2" in a single lift
- Easier handling & higher sustainability

SKU	SIZE	PALLET	Compression Strength	> 3500 PSI (28 Days)
PPELW30	33 lb bag	48 bags	Time to Flooring	1/4" depth - 4 hrs

The Product Between the Problem and Perfection.

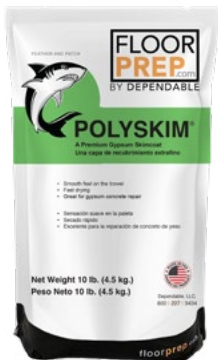


FloorPrep trowelable patching products are ideal for coverage on a variety of surfaces or subfloors. Varying from blended cement to mildewcide protected gypsum based products, they are adhesive friendly and easy to use.

POLYSKIM

Polymer Modified Gypsum Patch and Skim Coat

POLYSKIM® is a premium gypsum based skimcoat designed for use over gypsum concrete, wood, and other surfaces. POLYSKIM's polymer modified formula allows for a creamier feel under the trowel, enhanced bond, and superior dry time.



- Creamy, smooth application
- Fast Drying
- Polymer modified for superior bond and durability
- No additives required

SKIMCRETE® XL

Rapid Drying, Cementitious Floor Patch and Skim Coat

SKIMCRETE® XL is a fast drying, polymer modified, cementitious patch for smoothing dry interior substrates prior to installation of flooring finishes. Fast drying with extended potlife extends your working time, not delaying your finish. SKIMCRETE® XL is easy to work with on virtually any interior surface.



- Rapid, Self-drying patch
- Superior workability
- Feather edge to 1"
- Creamy, grit free application
- High compressive strength Creamy, grit-free application
- No dusting or cracking

SKU	SIZE	PALLET	Compression Strength	3500 PSI (28 Days)
DPS25	25 lb bag	90 bags	Time to Flooring	1/4" depth- 4 hrs
DPS4X10	4 x 10 lb bags	45		

SKU	SIZE	PALLET	Compression Strength	>3750 (28 Days)
DSCXL25	25 lb bag	90 bags	Time to Flooring	1/4" depth- 75 min
DSCXL50	50 lb pail	36		

Our patch and repair product line is designed to meet the needs of flooring professionals seeking reliable and high-performance solutions. Our products offer superior ease of use with smooth application, rapid drying times, and excellent bonding to a variety of substrates. With a focus on quality, durability, and innovation, our solutions are perfect for achieving professional results efficiently, ensuring your repairs and installations are top-notch.

FloorPrep.com's trowelable patching products are ideal for coverage on a variety of surfaces or subfloors. Varying from blended cement to mildewcide protected gypsum based products, they are adhesive friendly and easy to use.



WHITE SKIMCOAT

Gypsum Patch and Skimcoat

White SkimCoat is the patch professionals choice for economical, fast setting, high strength gypsum based patch. When White SkimCoat is used with FloorPrep's White Latex Liquid admixture, it provides increased adhesion and flexural strengths for use over problematic substrates.



- Dimensionally stable with superior bond to a variety of substrates
- Rapid Drying
- Horizontal and vertical applications
- Mildewcide Protected
- Compatible with White Latex Liquid

WHITE LATEX LIQUID®

Latex Additive to Improve Patch Bond and Strength

White Latex Liquid is a non re-emulsifiable latex additive that is to be used in lieu of water as an admixture with White Skim Coat or Skimcrete XL to increase patch performance and durability. The addition of White Latex Liquid will increase the adhesion and flexibility of White Skim Coat and Skimcrete XL.



- Additive for White Skimcoat and Skimcrete XL
- Improves patch bond, flexural and surface strength
- Enhanced water resistance and patch durability
- Mildewcide Protection

SKU	SIZE	PALLET	Compression Strength	4000 PSI (28 Days)
DSFLCB25	25 lb bag	90 bags	Time to Flooring	1/8" depth - 30 min
DSFLCB50	50 lb pail	36 pails		

SKU	SIZE	PALLET
DWL5	5 gal pail	36
DWL4X1	4 x 1 gal box	36

PrepPro Feather

Trowelable Flooring Underlayment & Patch

PrepPro Feather™ is a latex modified, fine textured, trowel applied, rapid drying cementitious underlayment for interior use. PrepPro Feather provides a smooth, durable surface for the installation of a variety of floor finishes such as vinyl, carpet, engineered wood or tile. PrepPro Feather dries rapidly, permitting the installation of floor coverings in as little as 30 minutes.



- Self-Drying, Install Flooring as quickly as 30 minutes
- Easy Mixing and placement with no additives required
- Superior Bond to absorbent and non-absorbent materials
- RH Tolerant

PrepPro Rapid Concrete (RC)

High Strength Geo-Polymer Screed Mortar

PrepPro Rapid Concrete (RC) is a high-performance screed mortar engineered for fast track interior and exterior applications that require rapid drying, exceptional bond and durability. PrepPro RC may be conveniently mixed in mortar mixers, extended 50% with aggregate and holds slopes well for ramping applications including resloping of exterior concrete such balconies.



- Suitable for Interior and Exterior applications
- Superior screed for trench fills, balcony reslopes, deep ramps & more
- Suitable for applications 3/8" - 6" in a single lift*
- Use for concrete repairs prior to application of Platform EMS, Epoxy Moisture Mitigation

SKU	SIZE	PAL-	Compression Strength	> 3500 PSI (28 Days)
DPPF4X10	4X10 lb bag	48 bags	Time to Flooring	1/4" depth - 30 min

SKU	SIZE	PALLET	Compression Strength	5500 PSI (28 Days)
PPRC50	50 lb bag	48 bags	Time to Flooring	1/4" depth - 90 min

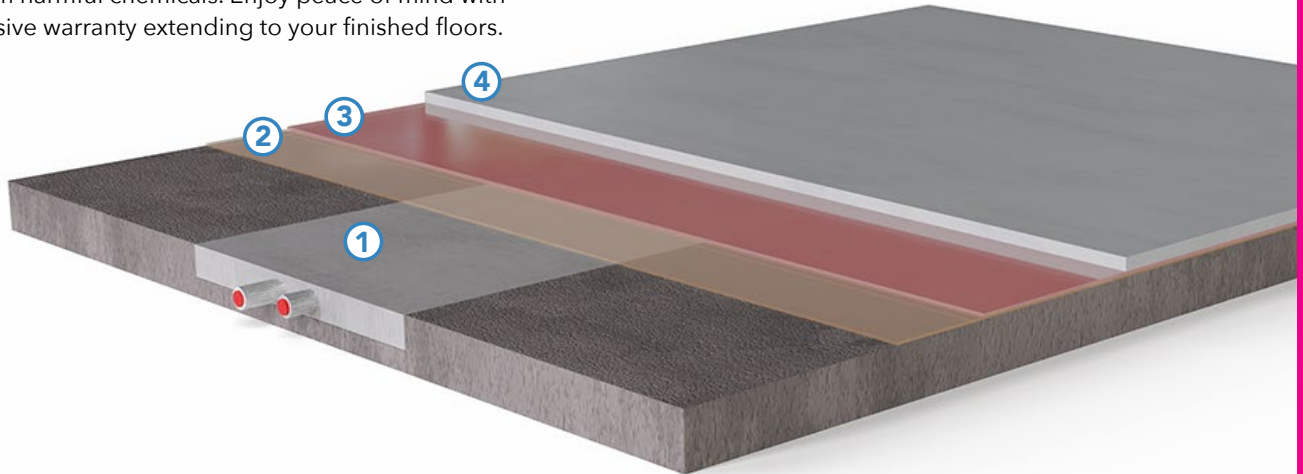
To Protect and Preserve

A Complete Moisture Mitigation System

Elevate your flooring with FloorPrep.com and Platform's top-tier moisture mitigation. Exceeding ASTM standards, these solutions resist high pH, handle 100% RH and 25 lbs MVER, and are free from harmful chemicals. Enjoy peace of mind with our comprehensive warranty extending to your finished floors.



- ① PrepPro RC
- ② Platform EMS
- ③ Primer P360
- ④ Self-leveling Underlayment (Platform L3/Platform FT)



Platform EMS

Advanced Epoxy Resin Moisture Mitigation Solution

At FloorPrep we understand the cost and interruption moisture can cause to flooring and the commercial environment. We offer only the most reliable means to treat moisture issues with a system that is suitable for use on concrete with up to 100% RH (Per ASTM F2170) or a Moisture Vapor Emissions rate of 25 lbs (per ASTM F1869). Our commitment to performance and installer well being led FloorPrep to develop Platform EMS free of Benzyl Alcohol (vulnerable to failure) and Nonylphenols (Health hazard). Our warranty represents the best in the industry with replacement through to the finished flooring surface. When risk of moisture intrusion and damage is not an option - turn to Platform EMS to keep your flooring and environment dry and healthy!

- Meets Requirements of ASTM F3010
- Treats Concrete up to 100% RH (ASTM F2170) and 25 lbs MVER (ASTM F1869)
- Contains No Benzyl Alcohol (contributes to osmotic blisters)
- Contains No Nonylphenols (associated with health risks)
- Coverage per kit -300-400sq ft
- Warranty available through to the finished floor*

PrepPro SLV

Penetrating and Consolidating Low Viscosity Epoxy Primer

PrepPro SLV is a very low viscosity water-based surface strengthening epoxy primer. A single coat application, PrepPro SLV penetrates compromised gypsum or lightweight concrete and provides a strengthened surface prior to application of leveling, patching, waterproofing, or installation of flooring goods. PrepPro SLV may also be utilized to treat stable surfaces that suffer from hairline cracking. Once cured, PrepPro SLV is typically compatible with primers & adhesives for non absorbent surfaces.

- Superior penetration of weak, dusty surfaces
- One Application System
- Fast, Cost efficient repairs
- Low odor and Low VOC

SKU	SIZE	PALLET	Coverage per kit	400 ft ²
PEMS-3.16	3.16 GAL KIT	24	Dry Time	5-6 hours

SKU	SIZE	PALLET	Coverage per kit	100-350 ft ²	*DEPENDENT ON RATIO OF MIX
PPSLV63	.63 GAL	50	Dry Time	6-12 hours	



Primer MF

Professional Interior Primer for Patch and Underlayment

A multi-purpose primer for the Multi-Family environment! Primer MF provides superior bond and enhances product performance of FloorPrep underlayments and patches when applied to Gypsum, wood, concrete, Adhesive residue, LVP/VCT, epoxy and more. Offers maximum versatility, Ultra low-VOCs, low odor, fast drying, tremendous coverage and easy handling.



- ▶ Fast drying over absorbent and non absorbent surfaces
- ▶ Strengthens weak Gypsum surfaces
- ▶ Isolates approved adhesives
- ▶ Low odor and Ultra low-VOC

Primer P360

Universal, Alkali Resistant Primer for Underlayments

PRIMER P360 is a breakthrough acrylic copolymer primer technology with alkali resistance to pH 14 while providing superior bond to substrates when used with Dependable Self-leveling underlayments. Suitable for a wide variety of porous and non-porous substrates making it the only required primer in typical SLU installations. Offers maximum versatility, ZERO VOCs, fast drying, tremendous coverage and easy handling.



- ▶ Fast Drying
- ▶ Maximum versatility over absorbent and non-absorbent substrates
- ▶ Superior Bond Performance
- ▶ Low odor and low-VOC
- ▶ Prolonged resistance to high pH14

SKU	SIZE	PALLET	Coverage	Up to 250 - 400 ft ²
DMFPG	5 gal pail	36 pails	Dry Time	45 - 90 minutes
DMFP4X1	4 x 1 gal	36 boxes		

SKU	SIZE	PALLET	Coverage	Up to 450 - 650 ft ²
PP3605G	5 gal pail	36 pails	Dry Time	45 - 90 minutes
PP3604X1	4 x 1 gal	36 boxes		

Multi-Family OdorSeal

Penetrating sealer for sealing substrate odor

A water-based emulsion that penetrates into absorbent substrates and forms a strong odor and water-resistant film. Enzymatic treatments consume what they can at the odors source, however fresh spills often reactivate remaining substrate contamination and release additional odor. FloorPrep Multi-Family Odor Seal penetrates into absorbent substrates and forms a highly water-resistant film locking moisture out, and odors in



- ▶ Seals Old Odors in, Keeps new ones out!
- ▶ Easy application by broom
- ▶ Quick Drying (typically under 60 minutes)
- ▶ Low odor and Ultra Low VOC

SKU	SIZE	PALLET	Coverage	Up to 350 - 500 ft ²
DMFO55G	5 gal pail	36 pails	Dry Time	60 - 90 minutes
DMFOS4X1	4 x 1 gal	36 boxes		

TopCoat Sealer

Water Based Emulsion for Sealing Gypsum Substrates

A water-based emulsion that penetrates into gypsum substrates, binds dust and prepares the surface to receive finished floor coverings. Application of FloorPrep Topcoat and Sealer is simple and typically dries to the touch within 45 - 90 minutes. Once dried, LVP/LVT, Tile thinset mortars and more may be applied directly to Topcoat Sealer.



- ▶ Meets ASTM F2419 for sealing gypsum based underlayments
- ▶ Quick Drying (45 - 90 minutes).
- ▶ Low odor and Ultra Low VOC.
- ▶ Binds dust to increase bond performance over gypsum

SKU	SIZE	PALLET	Coverage	Up to 250 - 350 ft ²
DTSC5G	5 gal pail	36 pails	Dry Time	45 - 90 minutes
DTSC4X1	4 x 1 gal	36 boxes		

Sound Control is On a Roll

A Trusted System for Multi-Family and More

Whether in plane subfloor movement, moisture, or noise is an issue for your flooring installation the FloorPrep.com underlayment line has the solution for you. Keep both residential and commercial floors durable and comfortable with these products.



KeedeRoll® MT

High load bearing Uncoupling and Sound Control Mat

- 2 in 1 uncoupling and sound deadening solution!
- Extra Heavy Rated (ASTM C627)
- 21 Point IIC Delta (8" Concrete)
- Reduce Weight load by 75% vs Recycled rubber
- Simplified installation to concrete with standard floor adhesives!

SKU	LENGTH	COVERAGE	WEIGHT
KeedeRoll MT 200	50 ft.	200 sq. ft.	30 lbs.



QQ Soft Step™

Rubber Acoustical Underlayment

Step Soft™ is a recycled rubber flooring underlayment designed for reducing impact noise in the floor sealing assembly. StepSoft™ provides an isolation layer in the assembly which reduces vibrations necessary for achieving industry noise standards. StepSoft™ is a critical component in meeting International Building Code requirements within the floor ceiling assembly in most concrete multifamily applications. StepSoft™ meets the CHPS standards for VOCs and passes ASTM C627 (The Robinson Wheel Test) for residential applications.

StepSoft™ is suitable for use over nearly every substrate, and under nearly every floor covering. Its universal applications makes it a perfect solution for reducing impact noise for wood frame, residential, multifamily and commercial applications.

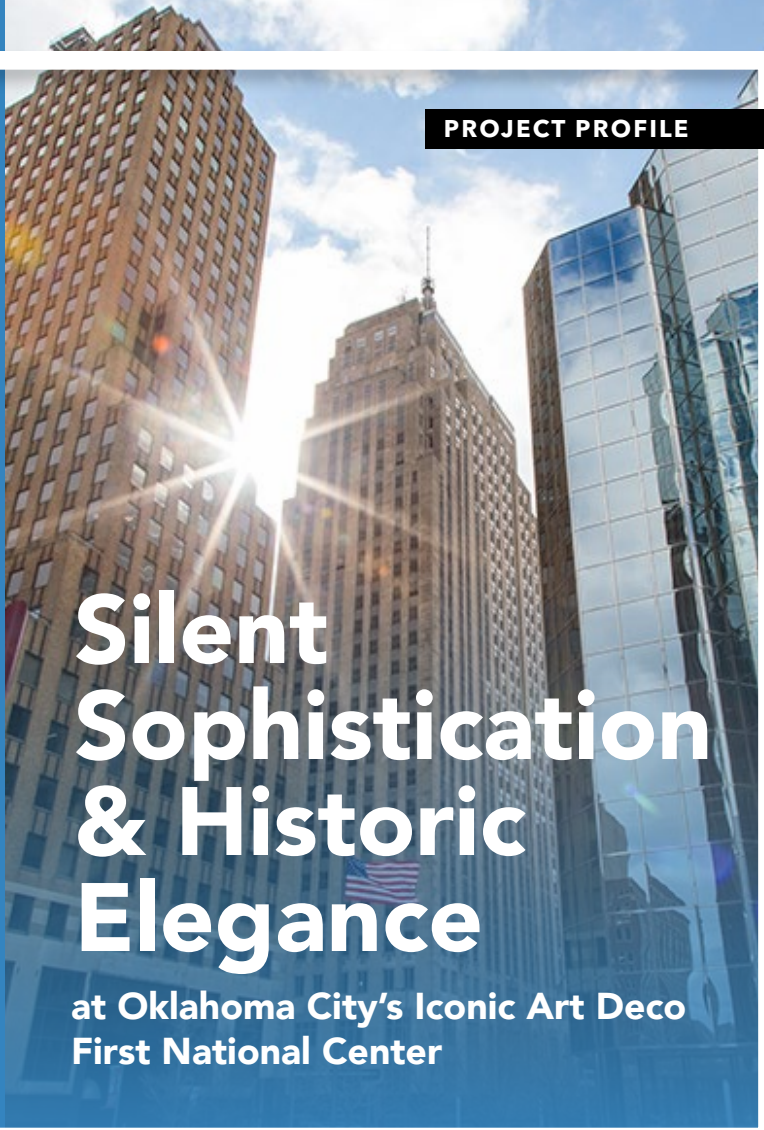
- Suitable for use under nearly any floor covering include hard surfaces like LVT, ceramic tile, and engineered hardwood
- Available in a variety of thicknesses to meet most IIC specifications
- Optimal for use on concrete substrates and in applications where numerous floor coverings are utilized

SKU	THICKNESS	LENGTH	COVERAGE	WEIGHT
01-X-0076	2.0 mm	50 ft.	200 sq. ft.	94 lbs.
01-X-0077	3.0 mm	50 ft.	200 sq. ft.	96 lbs.
01-X-0079	5.0 mm	25 ft.	100 sq. ft.	88 lbs.

The First National Center in Oklahoma City, a Art Deco masterpiece from 1931, has been magnificently restored to merge its historic charm with contemporary functionality. This mixed-use development now seamlessly integrates residential apartments, dining venues, retail spaces, and a signature hotel.

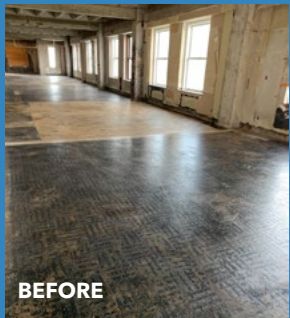
Central to this transformation was the use of advanced materials: **Primer P360, Platform L3, and KeedeRoll® MT**. Primer P360's rapid-drying formula ensured a strong bond across diverse surfaces, while Platform L3's high-strength, self-leveling underlayment significantly streamlined surface preparation. KeedeRoll® MT added an extra layer of quiet comfort for both residents and hotel guests. This strategic combination not only provided a flawless foundation for the building's renovation but also preserved its architectural heritage, enhancing its functionality for modern use.

PROJECT PROFILE



Silent Sophistication & Historic Elegance

at Oklahoma City's Iconic Art Deco First National Center



BEFORE



AFTER

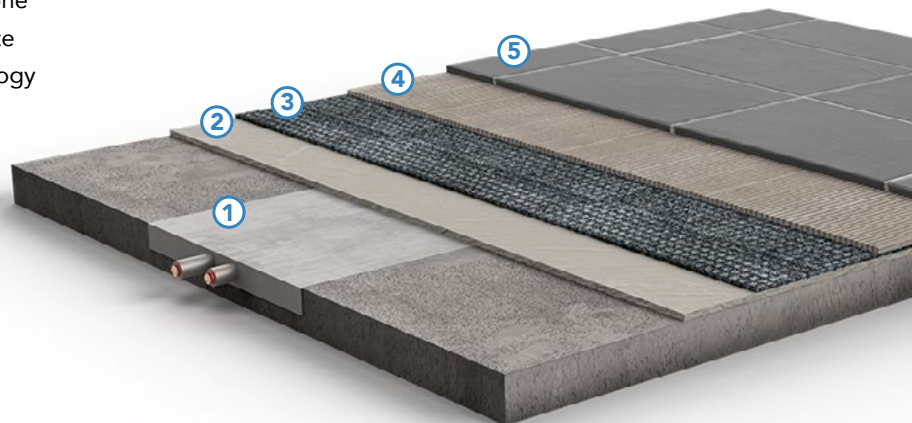
Roll Out Quiet Confidence

Improve Your Tile Installations with Soundproofing

KeedeRoll® MT is a high load bearing Uncoupling and Sound Proofing Membrane ideal for use under ceramic tile installations. KeedeRoll® MT's geometrical shape with entangled net ensure an effective, well bonded one step application to isolate tile and grout from substrate movement. Bonded to a patented "Muffling" technology (MT) fabric KeedeRoll® MT provides exceptional reduction of sound and impact transmission.

KeedeRoll® MT represents a simple, one step installation that protects the finished tile installation from substrate stresses all while significantly reducing sound and noise transmission in multi-family, residential and commercial environments.

- ① PrepPro RC
- ② Approved Flooring Adhesive
- ③ KeedeRoll® MT
- ④ Keene Thinset
- ⑤ Ceramic Tile



FLOOR PREP

BY DEPENDABLE



QUALITY CONSTRUCTION STARTS AT HOME
American Made. Contractor Approved.



AIA
Continuing
Education
Provider

Want to learn more about FloorPrep by Dependable? Call and talk to a flooring expert.

440-333-1123

floorprep.com

Make it Flat. Pour it Smooth. Build it Sound.

DEP254397_092524

PRODUCT INFORMATION:

See our website FloorPrep.com for the most up-to-date product information.

NOTE:

Published technical data & instructions are subject to change without notice. Please contact Dependable for the most current technical data, safety data & application instructions. Keene Inc. and/or its affiliates assume no responsibility for any errors that may inadvertently appear in this document.

LET MAKE SAFETY FIRST!

Follow approved safety/industrial hygiene practices during installation. Wear appropriate personal protective equipment. Read applicable PDS and product literature before specification and installation.

© 2024 Keene Inc. and/or its affiliates. All rights reserved.

Printed in the USA

2926 Chester Avenue, Cleveland, OH 44114